

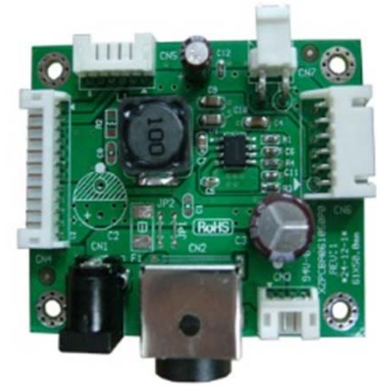
VC-241205

Voltage converter for LCD panel with 24V input



Features

- Suitable for LCD panel with 24V driving voltage
- DC 18-28V input
- 12V 5Amax. Output (3A recommended)
- High efficiency
- 24V pass-through to LCD panel
- Multiple input and output connectors
- Surge and EFT protected



Specifications

Input connector #1	DC jack (2.5D)	DC input / Ground
Input connector #2 (Mini-din)	Pin #1, #2	DC input
	Pin #3, #4	Ground
Input connector #3 (JST PH)	Pin #1, #2	DC input
	Pin #3, #4	Ground
Input	Input voltage	24Vdc (18 ~ 28Vdc)
	Input current	5A @24Vdc
Output characteristics	Output voltage	24Vdc (pass through)
	Output voltage	12+/-0.6Vdc, 5A max.
	24-12V efficiency	94%@3A, 97%@1.5A
	Max. ripple	120 mVpp
Temperature	Operation	-20 ~ 70 degree C
	Storage	-30 ~ 80 degree C

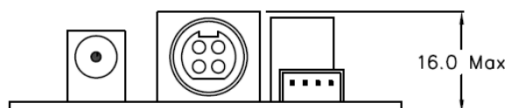
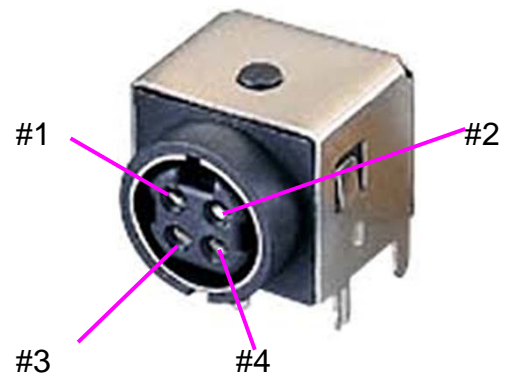
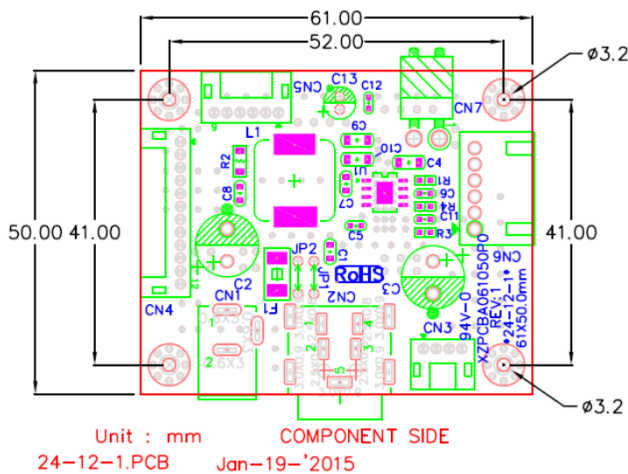
Output connector #1 (JST-PH)	Pin #1	PWM control
	Pin #2	Backlight enable
	Pin #3 - #7	Ground
Output connector #2 (JST-PH)	Pin #8 - #12	DC 24V
	Pin #1, #2	DC 12V
	Pin #3 (input)	Backlight enable
Output connector #3 (JST-XH)	Pin #4 (input)	PWM control
	Pin #5, #6	Ground
Output connector #4 (JST-VH)	Pin #1, #2, #3	DC 12V
	Pin #4, #5, #6	Ground
Output connector #4 (JST-VH)	Pin #1	DC 12V
	Pin #2	Ground
Dimension	61 (L) x 50 (W) x 16 (H) mm	

Ordering information

- Accessory :
 - 1). Wire connected to SDT scaler board
 - 2). Wire connected to LCD panel

* Please identify LCD panel part number
- Selected options :
 - 1). 24V power adapter, 2.5A, 3A, 4A

Product drawing



* All specification and photos are subject to change without notice.