

# SD-501, KT-501

Standard AD board & kit for LCD display



## Features

- VGA, DVI input
- Flexible, low cost and high performance
- For industrial, kiosk, gaming, digital signage application
- For 5.7" - 70" LCD panel with LVDS interface
- Optional RS232 remote control



## Specifications

Video	Hor. Frequency	30 ~ 86 KHz
	Ver. Frequency	48 - 75 Hz
	Resolution	1920x1200 @60Hz
	Pixel rate	188MHz for VGA 165MHz for DVI
	Plug & Play	DDC 1/2 Bi, 2B+
Colors	8 bit 16.7M true color	
	9300K, 7500K, 6500K, user mode	
OSD adjustment	Power, Enter, Left, Right, Auto	
	7 multi-languages	
Temperature	Operation	0 ~ 50 degree C
	Storage	-40 ~ 60 degree C

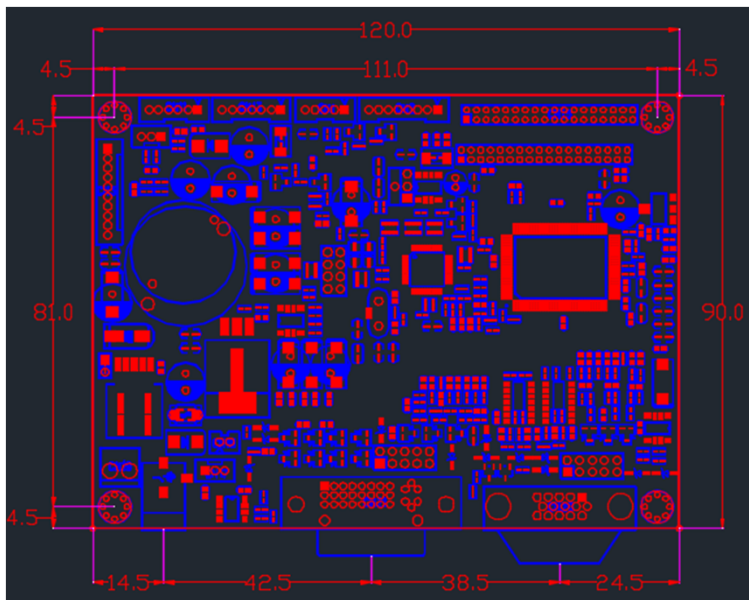
Input	VGA connector	15 pin D-sub
	DVI-D connector	24+5P D-sub
	DC connector	2.5mm diameter
Power	DC input	12 Vdc / 0.2A
	Consumption	< 2.5W
	Power saving	< 0.5W
	Management	VESA DPMS
	Panel selection	3.3V / 5V / 12V
Dimension	120 (L) x 90 (W) x 16 (H) mm	
	Packing quantity	100 pcs / carton
Agency	FCC / CE compliance	

## Ordering information

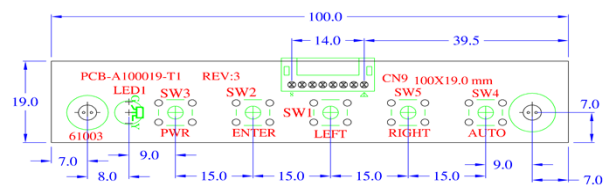
- Kit accessory :
  - 1). OSD board
  - 2). OSD wire
- Selected options :
  - 1). LVDS wire
  - 2). LED wire
  - 3). VGA cable
  - 4). DVI cable
  - 5). RS232 cable
  - 6). LED controller
  - 7). Power adapter
  - 8). Power cord
  - 9). RS232 board

## Product drawing

AD board



OSD board



\* All specification and photos are subject to change without notice.