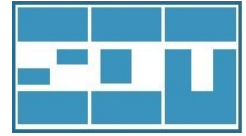


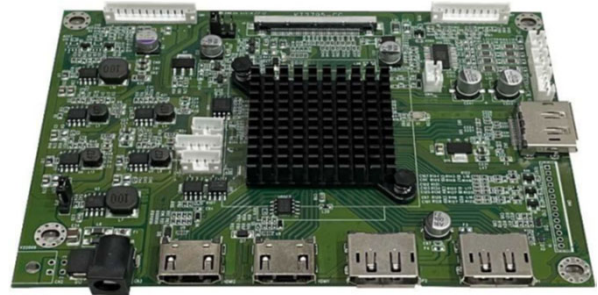
SD-420, KT-420

Standard AD board & kit for 4Kx2K LCD display



Features

- Each two HDMI 2.0 and DP 1.2 input
- HDCP 1.4 / HDCP 2.2
- Support 8 lanes Vx1 and eDP output
- High performance 4096x2160 @60Hz
- Support 8/ 10 bits through Vx1 and eDP
- Dual channel stereo audio with 8 ohm 2W x 2
- Optional IIC interface for light sensor
- Optional RS232 and IR control



Specifications

Video	Hor. Frequency	23 ~ 153 KHz
	Ver. Frequency	50 - 75 Hz
	Resolution	4096x2160 @60Hz
	Pixel rate	18G bps for HDMI
		21.G bps for DP
Plug & Play	DDC	
Colors	8 / 10 bit 1074M true color	
	9300K, 6500K, 5700K, user mode	
OSD adjustment	Power, Menu, Up, Down, Source	
	English, Chinese(T)	
Dimension	140 (L) x 100 (W) x 14 (H) mm	
	Packing quantity	50 pcs / carton
Temperature	Operation	0 ~ 70 degree C
	Storage	-20 ~ 80 degree C

Input	HDMI connector x2	HDMI v2.0, type A
	Display port	V 1.2 HBR2/HBR
	DC connector	2.1mm diameter
	Audio line in	on-board 3 pin wafer
Optional input	IIC connector	on-board 4 pin wafer
	RS232 connector	on-board 5 pin wafer
	IR connector	on-board 3 pin wafer
Power	DC input	12 Vdc / 0.8A
	Consumption	< 10W
	Power saving	< 0.5W
	Management	VESA DPMS
	Panel selection	PVcc / 5V / 12V
	Auxiliary o/p	12V / 5V
Agency	FCC / CE compliance	

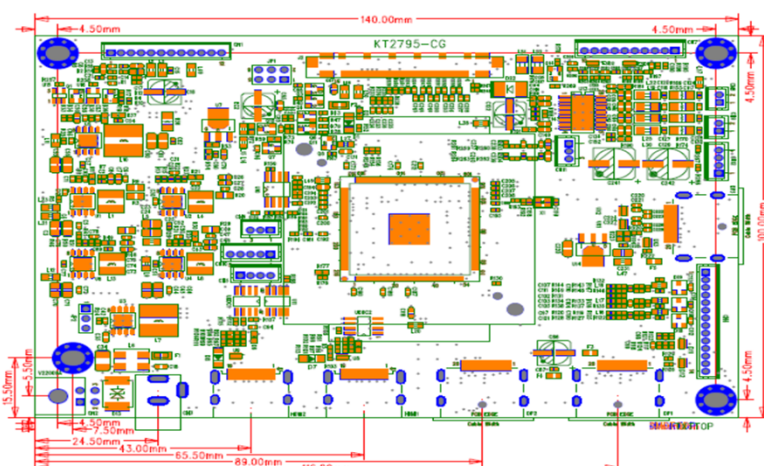
Ordering information

- Kit accessory :
 - 1). OSD board
 - 2). OSD wire
- Selected options :

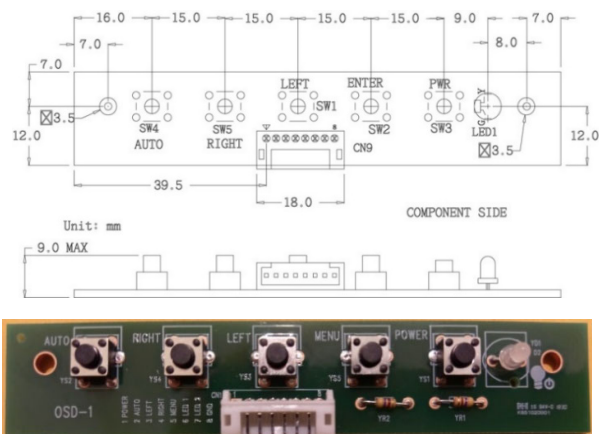
1). eDP/Vx1/LVDS cable	2). LED wire	3). Audio cable
4). HDMI cable	5). DP cable	6). LED controller
7). Power adapter	8). Power cord	9). Light sensor board
10). Speaker	11). IR board	12). IR remote controller

Product drawing

AD board



OSD board



* All specification and photos are subject to change without notice.