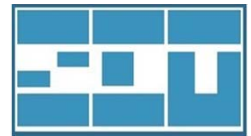


# SD-413, KT-413

Standard AD board & kit for 4Kx2K LCD display



## Features

- HDMI, DP, on-board VGA/Audio input
- SD-413-1 for 4 lanes eDP output
- SD-413-2 for 8 pairs V-by-one output
- High performance 4096x2160 @60Hz
- High performance scaling and PQ engine
- For large size digital signage application
- Dual channel stereo audio with 4 ohm 5W x 2
- Support two windows PIP/PBP
- Optional RS232 and IR control



## Specifications

Video	Hor. Frequency	23 ~ 153 KHz
	Ver. Frequency	50 - 75 Hz
	Resolution	4096x2160 @60Hz
	Pixel rate	205MHz for VGA
		18G bps for HDMI 21.G bps for DP
Plug & Play	DDC/CI	
Colors	10 bit 1074M true color	
	9300K, 6500K, 5700K, user mode	
OSD adjustment	Power, Menu, Up, Down, Source	
	English	
Dimension	150 (L) x 132.5 (W) x 14 (H) mm	
	Packing quantity	50 pcs / carton
Temperature	Operation	0 ~ 70 degree C
	Storage	-20 ~ 80 degree C

Input	VGA connector	14 pin on-board wafer
	HDMI connector	20 pin on-board wafer
	HDMI connector x2	HDMI v2.0, type A
	Display port	V 1.2a HBR2
	Audio connector	3 pin on-board wafer
	DC connector	2.1mm diameter
Optional input	UART connector	4 pin wafer
	IR connector	3 pin wafer
Power	DC input	12 Vdc / 0.8A
	Consumption	< 10W
	Power saving	< 0.5W
	Management	VESA DPMS
	Panel selection	PVcc / 5V / 12V
	Auxiliary o/p	12V / 5V
Agency	FCC / CE compliance	

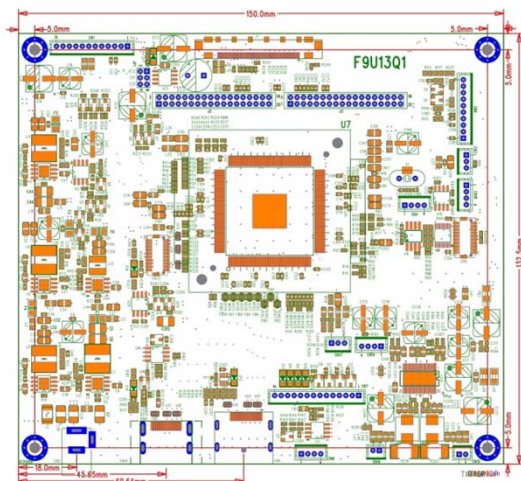
## Ordering information

- Kit accessory :
  - 1). OSD board
  - 2). OSD wire
- Selected options :
 

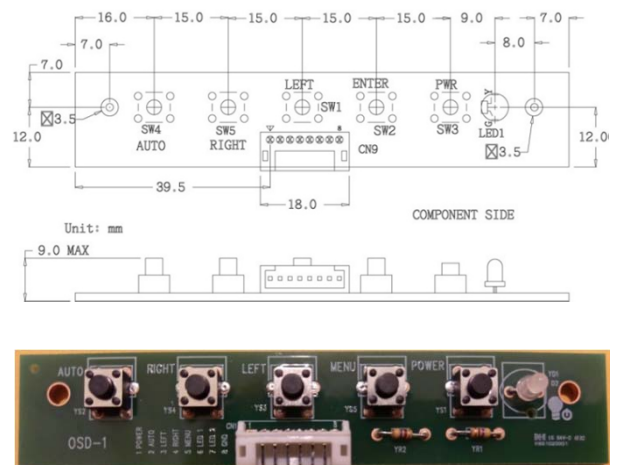
1). eDP/Vx1 panel cable	2). LED wire
4). HDMI cable	5). DP cable
7). Power adapter	8). Power cord
10). Speaker	11). IR board

## Product drawing

AD board



OSD board



\* All specification and photos are subject to change without notice.