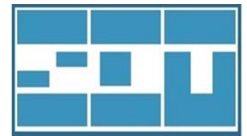


SD-412, KT-412

Standard AD board & kit for 4Kx2K LCD display



Features

- VGA, DVI, HDMI x2, Audio, USB player input
- 8 pairs V-by-one output
- High performance 4096x2160 @60Hz
- For large size digital signage application
- Dual channel stereo audio with 4 ohm 5W x 2
- Support 60Hz 3D passive LCD panel
- Support programmable ROI (region of interest)
- Support hardware JPEG, MP3
- Optional RS232 and IR control



Specifications

Video	Hor. Frequency	23 ~ 135 KHz
	Ver. Frequency	50 - 75 Hz
	Resolution	4096x2160 @60Hz
	Pixel rate	205MHz for VGA 165MHz for DVI
	Plug & Play	DDC/CI
Colors	10 bit 1074M true color	
	9300K, 6500K, 5700K, user mode	
OSD adjustment	Power, Menu, Up, Down, Source	
	English	
Dimension	190 (L) x 100 (W) x 14 (H) mm	
	Packing quantity	50 pcs / carton
Temperature	Operation	0 ~ 70 degree C
	Storage	-20 ~ 80 degree C

Input	VGA connector	15 pin D-sub
	DVI connector	24+1P D-sub
	HDMI connector x2	HDMI v1.4b / 2.0
	Audio connector	3.5mm phone jack
	DC connector	2.1mm diameter
Optional input	USB connector	Type A
	IR connector	3 pin wafer
Power	DC input	12 Vdc / 0.6A
	Consumption	< 9W
	Power saving	< 0.5W
	Management	VESA DPMS
	Panel selection	3.3V / 5V / 12V
Agency	Auxiliary o/p	12V / 5V
	FCC / CE compliance	

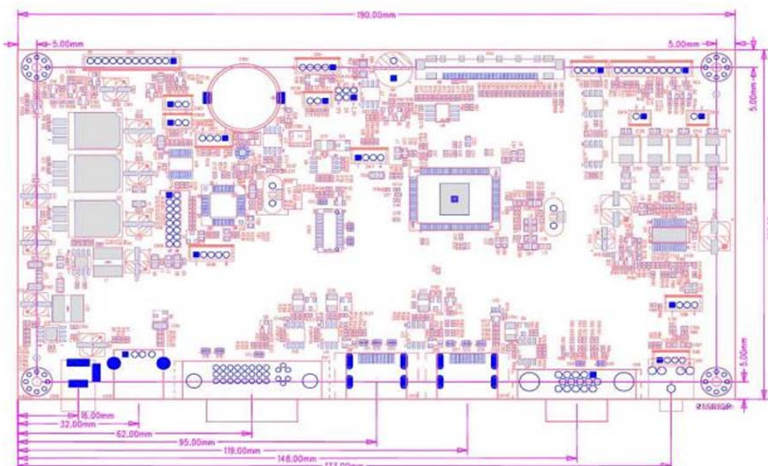
Ordering information

- Kit accessory :
 - 1). OSD board
 - 2). OSD wire
- Selected options :

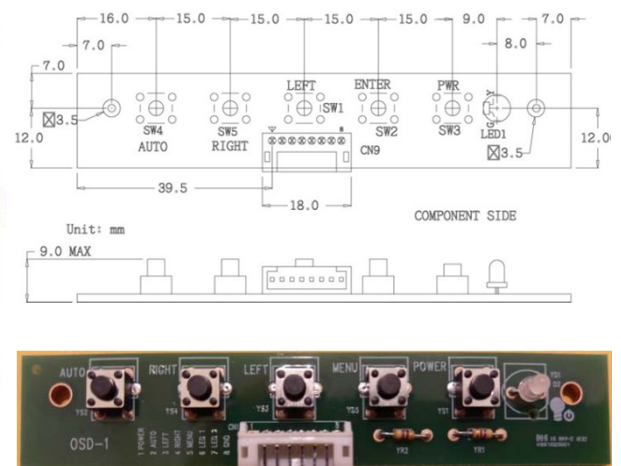
1). Vx1 panel cable	2). LED wire	3). VGA cable
4). HDMI cable	5). DVI cable	6). LED controller
7). Power adapter	8). Power cord	9). Audio cable
10). Speaker	11). IR board	12). IR remote controller

Product drawing

AD board



OSD board



* All specification and photos are subject to change without notice.