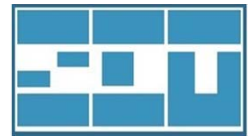


# SD-411, KT-411

Standard AD board & kit for 4Kx2K LCD display



## Features

- VGA, DVI, HDMI x2, DP, Audio, USB input
- eDP and 8 pairs V-by-one output
- High performance 4096x2160 @60Hz
- High performance scaling and PQ engine
- For large size digital signage application
- Dual channel stereo audio with 4 ohm 5W x 2
- Support PIP/PBP
- Optional RS232, IR control and light sensor



## Specifications

Video	Hor. Frequency	23 ~ 153 KHz
	Ver. Frequency	50 - 75 Hz
	Resolution	4096x2160 @60Hz
	Pixel rate	205MHz for VGA
		165MHz for DVI
21.G bps for DP		
Plug & Play	DDC/CI	
Colors	10 bit 1074M true color	
	9300K, 6500K, 5700K, user mode	
OSD adjustment	Power, Menu, Up, Down, Source	
	English	
Dimension	240 (L) x 140 (W) x 14 (H) mm	
	Packing quantity	50 pcs / carton
Temperature	Operation	0 ~ 70 degree C
	Storage	-20 ~ 80 degree C

Input	VGA connector	15 pin D-sub
	DVI connector	24+1P D-sub
	HDMI connector x2	HDMI v1.4 / 2.0
	Display port	V 1.2a HBR2
	Audio connector	3.5mm phone jack
Optional input	DC connector	2.1mm diameter
	USB connector	Type A
	IR connector	3 pin wafer
	DC input	12 Vdc / 1A
	Consumption	< 15W
Power	Power saving	< 1W
	Management	VESA DPMS
	Panel selection	3.3V / 5V / 12V
	Auxiliary o/p	12V / 5V
Agency	FCC / CE compliance	

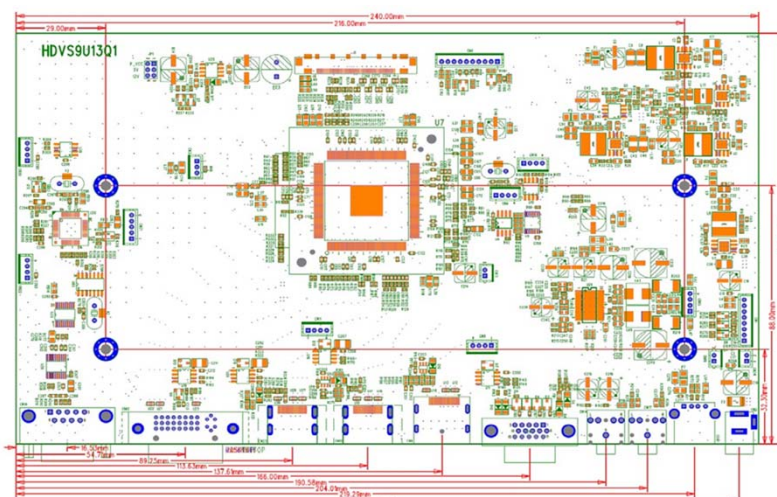
## Ordering information

- Kit accessory :
  - 1). OSD board
  - 2). OSD wire
- Selected options :
 

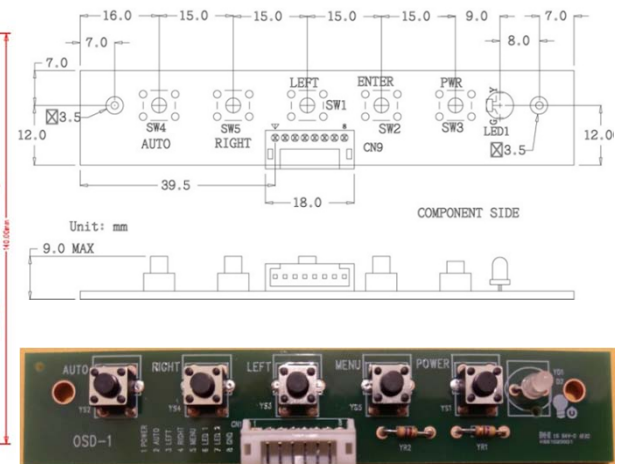
1). eDP/Vx1 panel cable	2). LED wire	3). VGA cable
4). HDMI cable	5). DP cable	6). LED controller
7). Power adapter	8). Power cord	9). Audio cable
10). Speaker	11). Light sensor / IR board	12). IR remote controller

## Product drawing

AD board



OSD board



\* All specification and photos are subject to change without notice.