

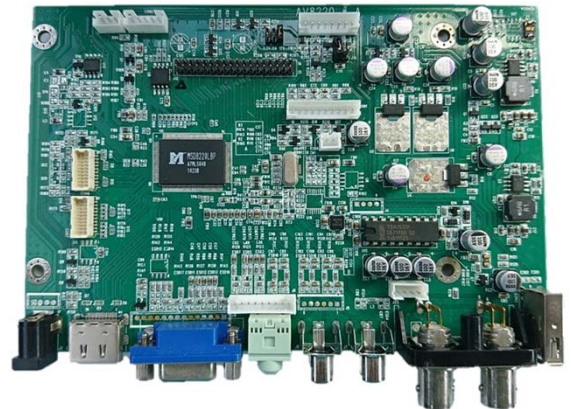
SD-410, KT-410

Standard AD board & kit for LCD display



Features

- VGA, HDMI, Audio, AV (BNC/RCA) and USB player
- Flexible, low cost and high performance
- For surveillance, industrial, digital signage application
- For 5.7" - 70" LCD panel with LVDS interface
- 3W+3W stereo audio
- Support NTSC/PAL/SECAM
- Support USB 2.0 host
- 3D comb filter & 3D noise reduction
- LVDS output
- Support RS232 control
- Optional IR control



(BNC or RCA connector for video input)

Specifications

Video	Hor. Frequency	15 ~ 153 KHz
	Ver. Frequency	56 - 75 Hz
	Resolution	1920x1200 @60Hz
	Pixel rate	205MHz for Analog 225MHz for Digital
	Plug & Play	DDC CI
Colors	8 bit 16.7M true color 9300K, 7500K, 6500K, user mode	
OSD adjustment	Power, Menu, Up, Down, Source Multi-languages	
Dimension	158 (L) x 106 (W) x 14 (H) mm	
	Packing quantity	50 pcs / carton
Temperature	Operation	0 ~ 70 degree C
	Storage	-20 ~ 80 degree C

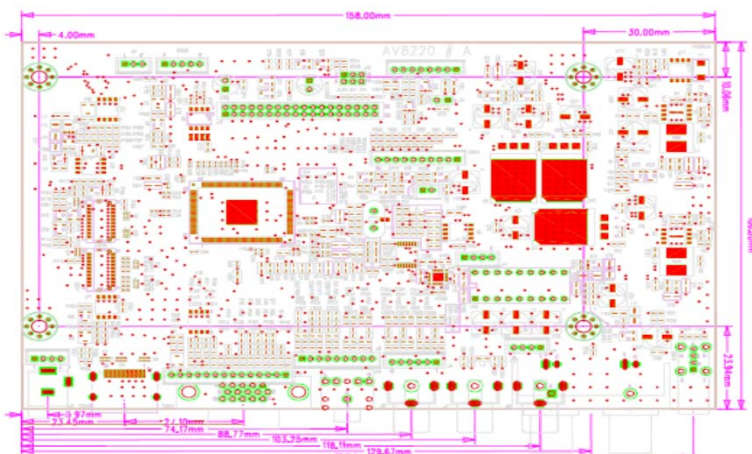
Input	VGA connector	15 pin D-sub
	HDMI connector	HDMI v1.4, HDCP v1.2
	Video connector	BNC connector
	Audio connector	Phone jack
	DC connector	2.1mm diameter
Output	USB connector	2.0 host
	Speaker connector	4 pin connector
Power	DC input	12 Vdc / 0.4A
	Consumption	~ 5W
	Power saving	< 0.3W
	Management	VESA DPMS
	Panel selection	3.3V / 5V / 12V
Agency	Auxiliary o/p	5V
	FCC / CE compliance	

Ordering information

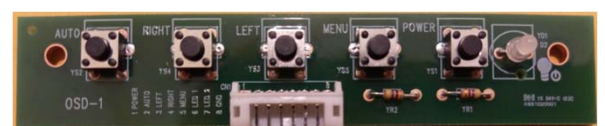
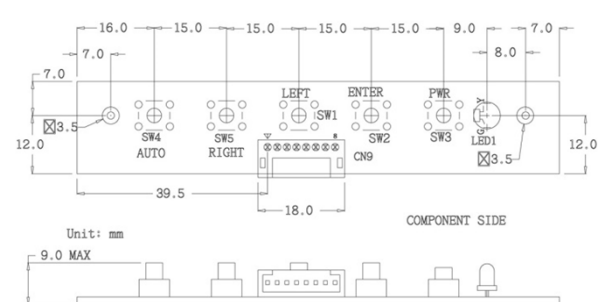
- Kit accessory :
 - 1). OSD board
 - 2). OSD wire
- Selected options :
 - 1). LVDS wire
 - 2). LED wire
 - 3). VGA cable
 - 4). LED controller
 - 5). Power adapter
 - 6). Power cord
 - 7). Power adapter
 - 8). IR remote controller
 - 9). HDMI cable

Product drawing

AD board



OSD board



* All specification and photos are subject to change without notice.